


# FOR THE FULL BAND

**TREBLE CLEF**  **TIME SIGNATURE**  $\frac{4}{4}$

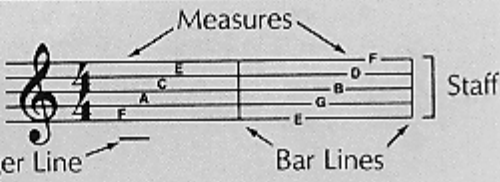
$\frac{4}{4}$  = 4 counts in each measure



Measures

Staff

Ledger Line

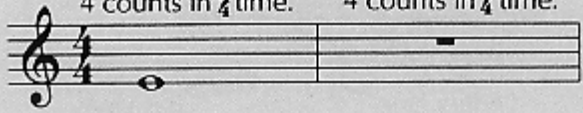
Bar Lines



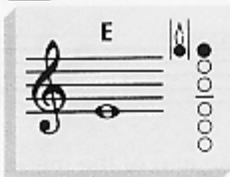

**WHOLE NOTE**  **WHOLE REST** 

A whole note gets 4 counts in  $\frac{4}{4}$  time.

A whole rest gets 4 counts in  $\frac{4}{4}$  time.



## 1 TIME FOR BAND

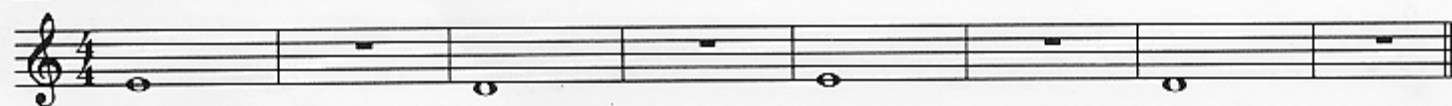
○ = open  
● = pressed down

▶ A double bar line marks the end of the music.

## 2 THE FUN CONTINUES


 

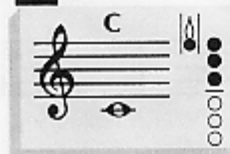

## 3 WHOLE LOTTA COUNTING



▶ Write in the counting and clap the rhythm before you play.

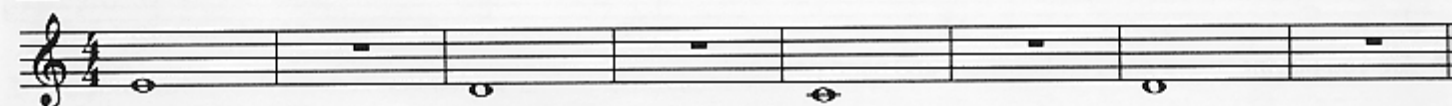
## 4 FOUR SCORE

Page 39 

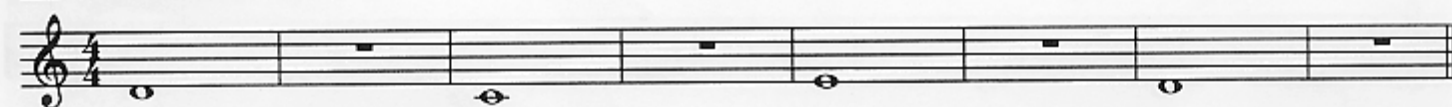
 

▶ When you see a page number followed by an arrow, *Excellerate* to the page indicated for additional studies.

## 5 MIX 'EM UP



## 6 MELTING POT



## 7 BAND ON PARADE





▶ Lines with a medal are *Achievement Lines*. The chart on page 47 can be used to record your progress.

HALF NOTE



HALF REST

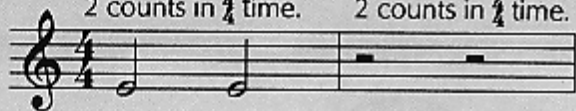


BREATH MARK



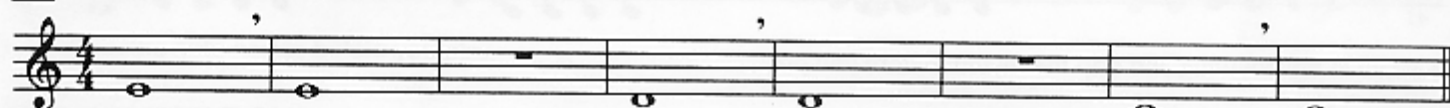
Each half note gets  
2 counts in  $\frac{4}{4}$  time.

Each half rest gets  
2 counts in  $\frac{4}{4}$  time.



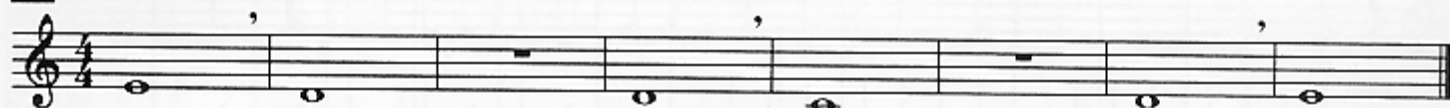
Take a breath.

## 8 A BREATH OF FRESH AIR

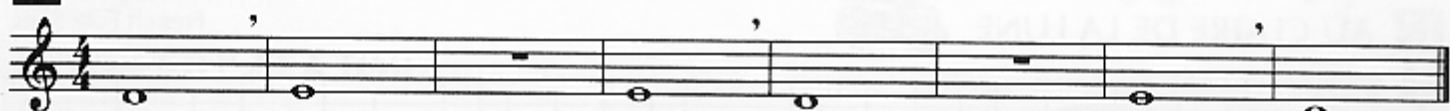


► Be sure to take a full breath of air.

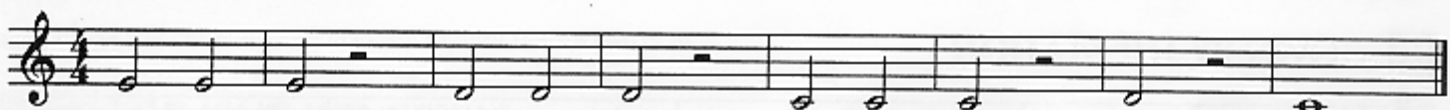
## 9 SIDE BY SIDE



## 10 TWO BY TWO



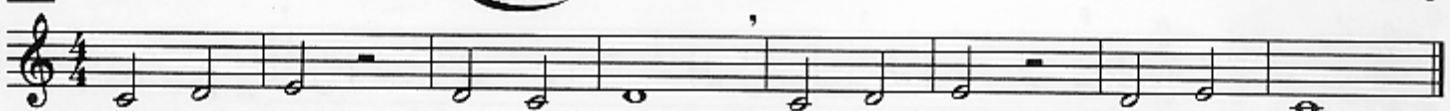
## 11 HALF THE PRICE



► Write in the counting and clap the rhythm before you play.

## 12 CARDIFF BY THE SEA Page 39

Welsh Folk Song

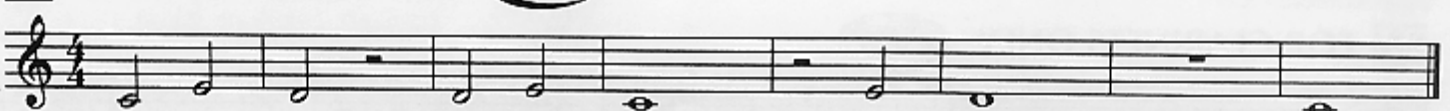


## 13 TWO FOR THE SHOW - Duet

A.

B.

## 14 GO FOR EXCELLENCE!



QUARTER NOTE



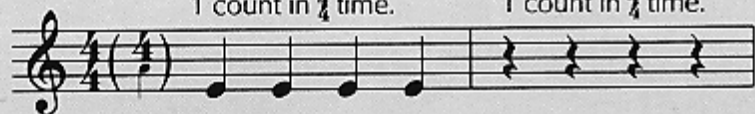
QUARTER REST



PHRASE

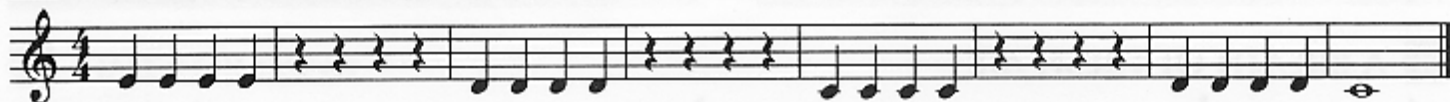
Each quarter note gets  
1 count in  $\frac{4}{4}$  time.

Each quarter rest gets  
1 count in  $\frac{4}{4}$  time.



A phrase is a musical thought  
or sentence. Phrases are usually  
four or eight measures long.

## 15 A QUARTER'S WORTH



► Write in the counting and clap the rhythm before you play.

## 16 HOT CROSS BUNS

English Folk Song



## 17 AU CLAIRE DE LA LUNE



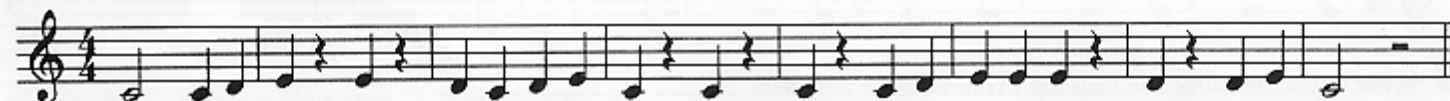
French Folk Song



► Draw in a breath mark at the end of each phrase.

## 18 DOWN BY THE STATION

Traditional

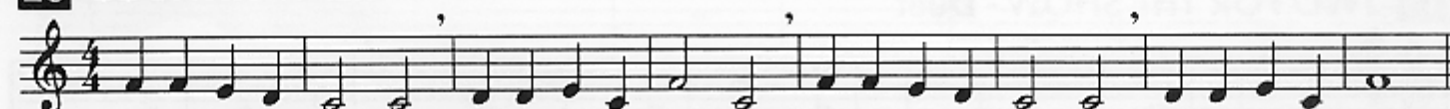


## 19 EASY STREET

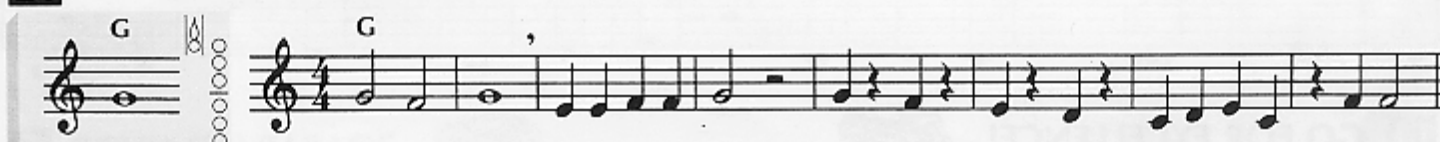


## 20 COUNTRY WALK

English Folk Song

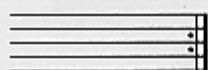


## 21 GETTIN' IT TOGETHER



## 22 FOR CLARINETS ONLY



**REPEAT SIGN**

Repeat from the beginning.

**COMMON TIME**

$$C = \frac{4}{4}$$

Common time means the same as  $\frac{4}{4}$  time.

**FERMATA**

Hold the note or rest longer than its usual value.

**SOLO**

One person plays.

**SOLI**

Whole section plays.

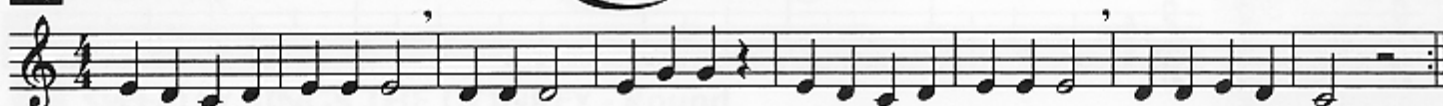
**TUTTI**

Everyone plays.

**23 MERRILY WE ROLL ALONG**

Page 39

Traditional



► Write in the note names before you play.

**24 LIGHTLY ROW - Duet**

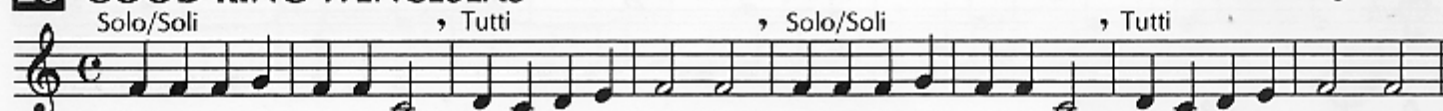
Traditional

**25 ONE STEP AT A TIME**

► Write in the counting and clap the rhythm before you play.

**26 GOOD KING WENCESLAS**

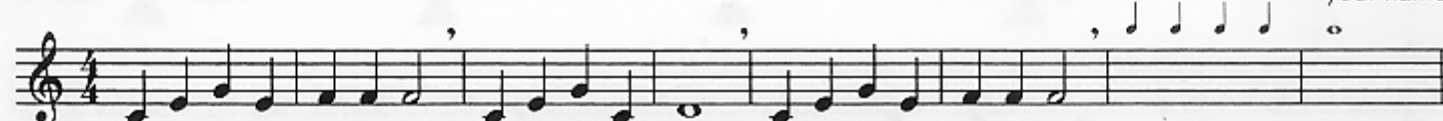
Traditional English Carol

**27 SONG OF THE FJORDS**

Norwegian Folk Song

**28**

Composer \_\_\_\_\_ your name



► Fill in the rest of the measures using the given rhythms and any notes you know. Title and play your composition.

**29 GO FOR EXCELLENCE!**